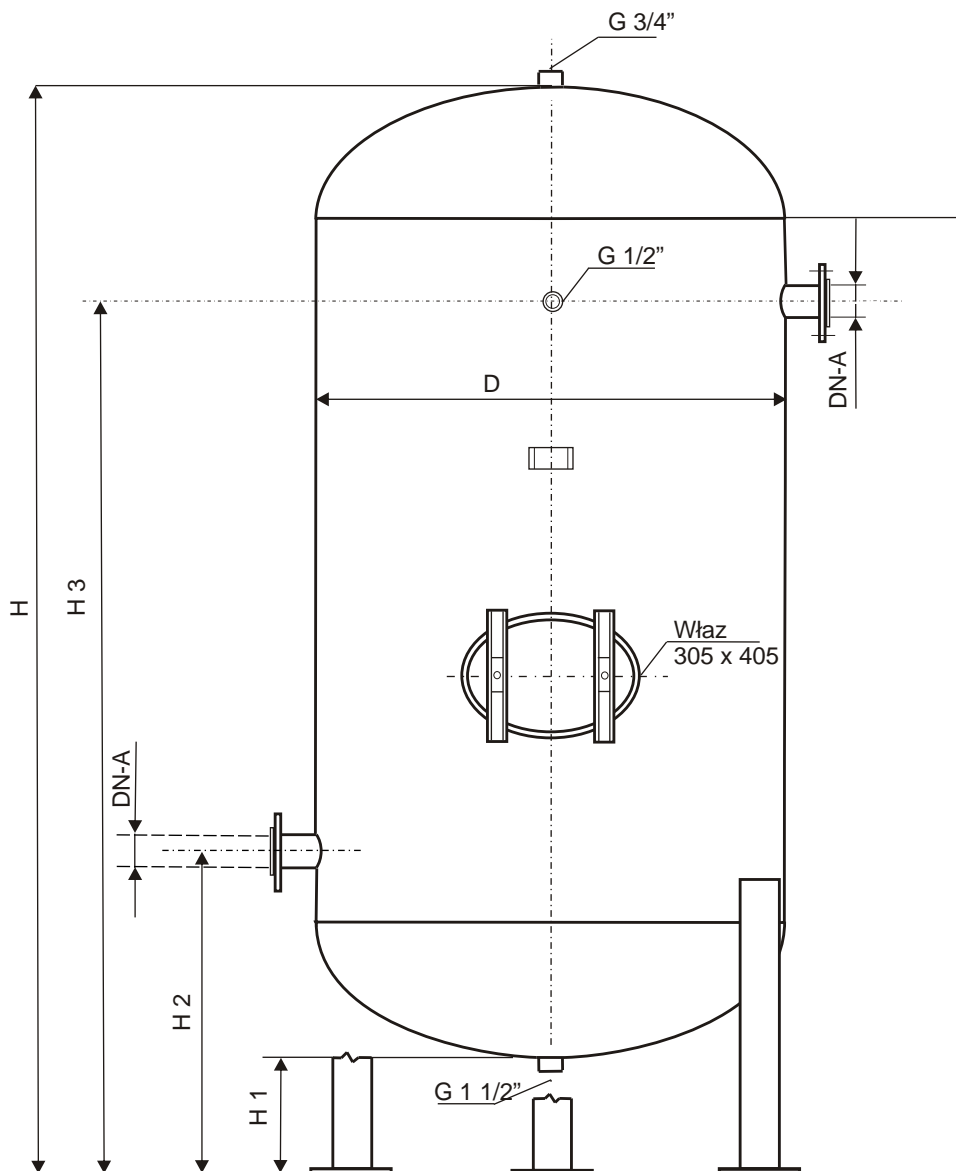




Karta nr 1

ZBIORNIKI WODY



Lp.	TYP	V	PS	D	H	H1	H2	H3	DN-A	Masa
		Litry	bar							
1.	ZW-800/6	800	6	800	1992	200	566	1626	100	280
2.	ZW-1000/6	1000	6	900	1942	200	621	1521	150	295
3.	ZW-1500/6	1500	6	1000	2292	200	651	1841	150	370
4.	ZW-2000/6	2000	6	1200	2192	200	701	1691	150	465
5.	ZW-2500/6	2500	6	1200	2592	200	701	2091	150	550
6.	ZW-3000/6	3000	6	1400	2342	200	796	1746	200	590
7.	ZW-4000/6	4000	6	1400	2992	200	796	2396	200	750
8.	ZW-5000/6	5000	6	1600	3092	200	846	2446	200	920